

TELECOM RANGE





ENGINE

Up to 1000h Maintenance Free
Deutz | Perkins



ALTERNATOR

3 Phase Sensing AVR (+/- 0.5%)

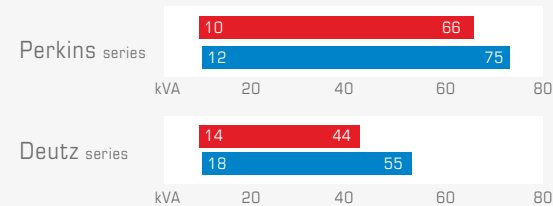


OPTIONAL

Tool kits | Dummy load |
Surge protection device

10-75 kVA TELECOM RANGE

50HZ 60HZ



LARGE FUEL TANK

Built-in fuel tank up to 1,000L, up to 14 days running without refueling

1000h MAINTENANCE

Extended oil sump and 1000h maintenance free filters allow 1000h maintenance intervals.

CLOUD-BASED FLEET MANAGEMENT

support GPRS, 4G & Ethernet connection

LOW NOISE

The noise level can be reduced by 15-35db through multiple noise control devices.

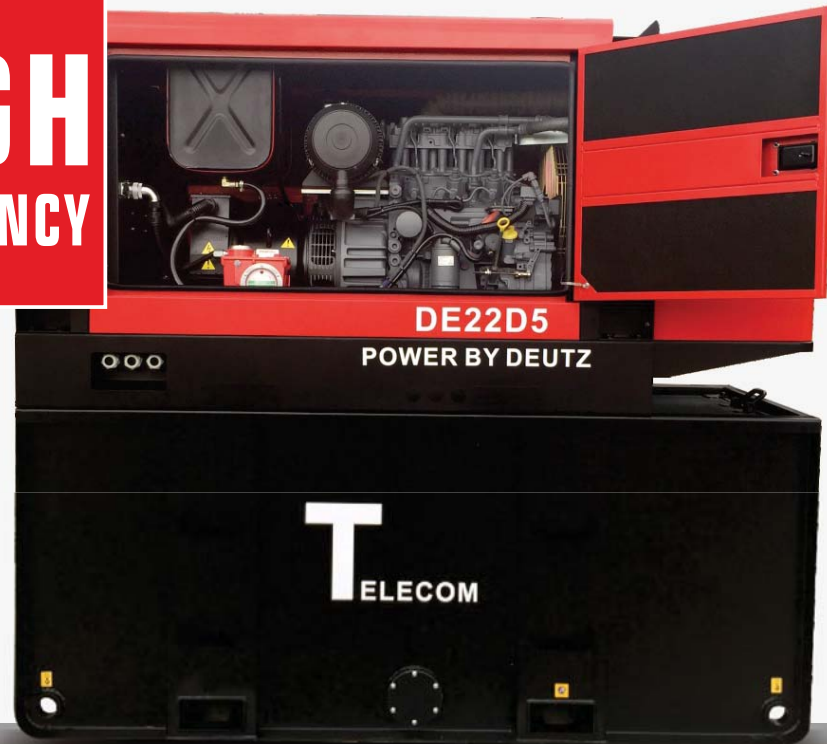
EASY OPERATION

The gensets are easy to operate due to human friendly design.

STRONG & DURABLE

Professional solutions, to the level of quality for operating in the most adverse conditions anywhere.

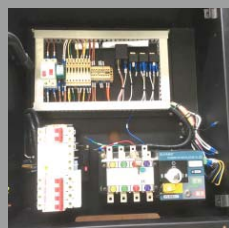
HIGH EFFICIENCY



1

Versatile control panels

AGG could provide integrated ATS, dummy load control system and be controlled remotely.



2

Maximum protection

Battery charger, battery isolator and maintenance-free battery are standard to protect operation.



3

Wide access for maintenance

Designs that simplify the maintenance and servicing



CLOUD-BASED FLEET MANAGEMENT

Safety | Security | Efficiency | Revenue Management | Reduce Costs |
Increase Revenue | Data Retention



REDUCES FREQUENCY OF
SITE VISITS AND OPTIMISES
MAINTENANCE



PC ACCESS

Web | Software | GPRS | Email



MOBILE ACCESS

App | Message | 4G(LTE) | 3G(UMTS) | GPRS | Email



REMOTE CONTROL OF THE GENSET

Turn on/off | Activate contactors | Change of mode | Monitor the fuel level
| Read the status of information on the generator set



SCHEDULED REFUELING AND MAINTENANCE

Scheduled the refueling and maintenance time



LOCATION

GPS Location | Tracking | Regional Designation



ALERT NOTIFICATIONS

Informed when the gensets are abnormal



THEFT ALERT

Anti-theft system by GPS location



CONTROLLER HISTORY DOWNLOAD

Enables download of the complete controller history which can aid in diagnose failure, operator usage, and warranty claim resolution.



AUTOMATED REPORTING

Allows for convenient monthly summary of fleet revenue performance and costs



1000 HOURS MAINTENANCE-FREE

Where generators are running continuously the greatest operating cost is for routine maintenance. Generally, generator sets require routine maintenance services every 250 running hours including the replacement of filters and lubrication oil. Operating expenses are not only for replacement parts but also for labour costs and transportation, which can be very significant for remote sites.

In order to minimize these operating costs and improve the running stability of generator sets, AGG Power has designed a customized solution that allows a generator set to run for 1,000 hours without maintenance.



AUTOMATIC LUBRICATING REFILL SYSTEM

Automatic lubricating oil refill system with precision control and consistent quality.



EXTENDED OIL SUMP

Extended oil sump to increase the lubrication oil capacity.



1000 HOURS MAINTENANCE-FREE FILTERS

The air filter, fuel filter and oil filter are 1000 hours maintenance free type.



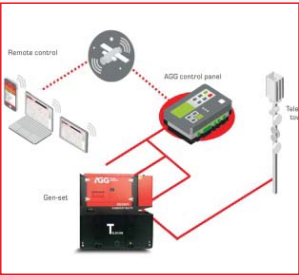
EXTENDED FUEL TANK

The extended fuel tank allowed the generator sets more than 1000 hours continuous running.



MAINTENANCE-FREE BATTERY

The standard starting batteries are maintenance free type.



STABLE REMOTE CONTROL

The stable remote control allow the availability of 1000 hours continuous running without maintenance.

TECHNICAL DATA



50HZ T

10-66kVA

Genset Model	ESP		PRP		Fuel Cons L/H (75%)	L*W*H (mm)	Engine	Engine Model	Country of origin	Cyl Arrangement	Displacement (L)	Gov	Cooling
	KVA	KW	KVA	KW									
P10D5	10	8	9	7	2.3	1870*800*2037	Perkins	403A-11G1		3L	1.1	M	
P17D5	17	13	15	12	3.1	1870*800*2037	Perkins	403A-15G2		3L	1.5	M	
P22D5	22	18	20	16	4	2150*800*2007	Perkins	404A-22G1		4L	2.2	M	
P33D5	33	26	30	24	5.4	2280*900*1847	Perkins	1103A-33G		3L	3.3	M	
P50D5	50	40	45	36	8.2	2400*900*1847	Perkins	1103A-33TG1		3L	3.3	M	
P66D5	66	53	60	48	10.4	2500*900*1847	Perkins	1103A-33TG2		3L	3.3	M	
DE14D5	14	11	13	10	2.9	1870*850*1957	Deutz	F2M2011		2L	1.6	M	
DE22D5	22	18	20	16	4.7	2150*850*1957	Deutz	F3M2011		3L	2.3	M	
DE33D5	33	26	30	24	6.3	2280*900*1717	Deutz	F4M2011		4L	3.1	M	
DE44D5	44	35	40	32	8.4	2280*900*1717	Deutz	BF4M2011		4L	3.1	M	

60HZ T

12-75kVA

Genset Model	ESP		PRP		Fuel Cons L/H (75%)	L*W*H (mm)	Engine	Engine Model	Country of origin	Cyl Arrangement	Displacement (L)	Gov	Cooling
	KVA	KW	KVA	KW									
P12D6	12	10	11	9	2.3	1870*800*2037	Perkins	403D-11G		3L	1.131	M	
P17D6	17	14	15	12	5.5	1870*800*2037	Perkins	403D-15G		3L	1.496	M	
P20D6	20	16	18	14	NA	1870*800*2037	Perkins	403A-15G2		3L	1.496	M	
P27D6	27	22	24	19	4.8	2150*800*2007	Perkins	404D-22G		4L	2.216	M	
P38D6	38	30	35	28	6.6	2280*900*1847	Perkins	1103A-33G		3L	3.3	M	
P59D6	59	47	53	42	9.9	2400*900*1847	Perkins	1103A-33TG1		3L	3.3	M	
P75D6	75	60	68	54	12.5	2500*900*1847	Perkins	1103A-33TG2		3L	3.3	M	
DE18D6	18	14	16	13	3.3	1870*850*1957	Deutz	F2M2011		2L	1.6	M	
DE28D6	28	22	25	20	4.6	2150*850*1957	Deutz	F3M2011		3L	2.3	M	
DE42D6	42	34	38	30	6.9	2280*900*1717	Deutz	F4M2011		4L	3.1	M	
DE55D6	55	44	50	40	9.0	2280*900*1717	Deutz	BF4M2011		4L	3.1	M	

Water-cooling

Oil-cooling

Telecom silent type

The engine is UK original

The engine is China original

The engine is India original

The engine is Germany original

The rating is according to ISO 8528-1: + 25°C MASL; 30% relative humidity. The power losses please consultant AGG Power Technical Apartment.

Further voltage rating are available under request: 50HZ_380V/415V/440V.

PRP-ISO8528: prime power is the maximum power available during a variable power sequence, which may be run for an unlimited number of hours per year, between stated maintenance intervals. The permissible average power output during at 24 hours period shall not exceed 80% of the prime power. 10% overload available for governing purposes only.

ESP-ISO8528: It is defined as the maximum power available, under the agreed operating conditions, for which the generating set is capable of delivering for up to 500 h of operation per year (of which no more than 300 h for continuative use) with the maintenance intervals and procedures being carried out as prescribed by the manufacturers. No overload capability is available.





AGG UK | AGG China | AGG USA | AGG UAE
info@aggpower.com | www.aggpower.com

AGG Power reserves the right to modify any characteristic prior notified.
AGG Power ® -2017 © All rights reserved

Distributed by